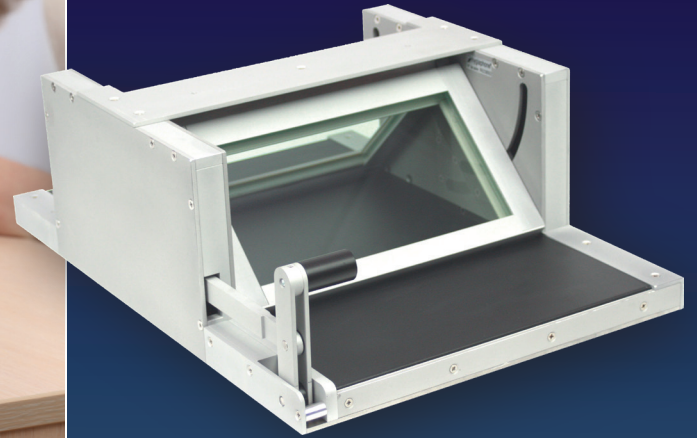


PACKET-/OBJECT- HANDLING SYSTEMS

SEBAL PM2



Reference:
A74022 Sebal PM2



Secure transfers of documents and other items for a safer welcome

Packet-/object-handling systems are integrated into counters or facades and provide the means to transfer documents, tickets, envelopes and packets between a secure area and an exterior area used by the general public. Packet windows enable larger items to be passed from one side to the other and because of the way in which they are designed, they offer protection against vandalism. Some models also provide bullet-proof resistance up to BR4 level, in accordance with the EN 1063 standards.

This model is for transferring documents, notes, coins and small items to a secure area and is designed to protect personnel against physical attacks. The Sebal PM2 is often installed in combination with the Parabal pay window.

DO YOU KNOW?



Other models in the packet-handling system range

- Rotapac ½ Gédéon BR4 (bullet-proof)
- Rotapac Gédéon BR4 (bullet-proof)

SEBAL PM2

Specifications

Model Sebal PM2

- RAL 9006 brushed anodised aluminium frame
- 2 BR4 bullet-proof panes
- Use: indoors or outdoors (sheltered)
- Resistance: vandalism proof
- Delivered assembled with screw and fastening kit
- Compatibility for installation with other Fichet products: the Sebal PM2 is compatible with the Parabal pay window. It screws directly onto the top of the packet-handler (also see the Parabal's product sheet). To make assembly easier, a mounting kit (Ref. A74145) is always supplied with the Sebal PM2.

Operation

The two shutters are mechanically servo-linked and articulated by a handle. These shutters open alternately

Installation

Installed and/or recessed into a counter

Applications

- Service stations
- Penitentiary centers
- Retail
- Control station

Advantages

- Provides employees with physical protection
- Aesthetic
- Convenient and easy-to-use
- Compatible with the Parabal pay window

Optional

- Parabal pay window (compatibility - Réf. A74023)



Dimensions

| Dimensions (mm) | | Sebal PM2 | |
|-------------------------------------|--|-----------|-----------------|
| | | Overall | Useful capacity |
| Height | 186 | 176 | |
| Width | 388 | 368 | |
| Depth | 565 | 200 | |
| Weight (kg) | 21 | | |
| Size of area to be reserved (H x L) | 196 mm x 398 mm with the exposed face (Sebal installed on the counter) 166 mm x 398 mm with the recessed face (Sebal recessed into the counter) | | |

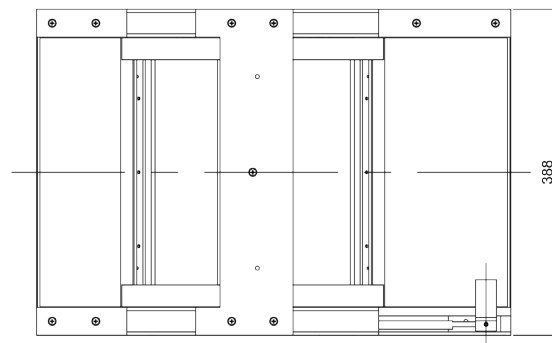
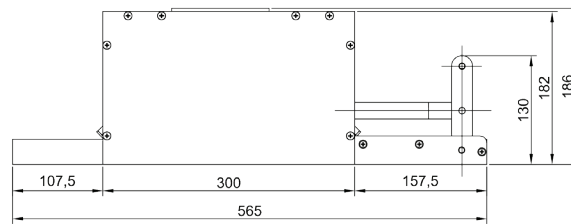
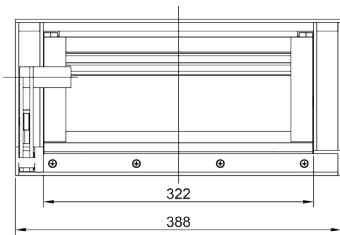
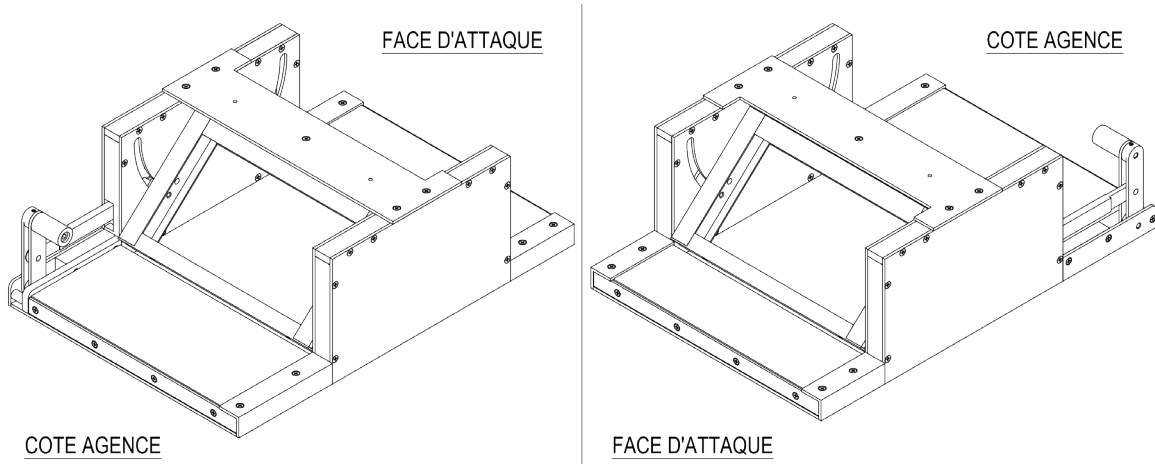
Packaging

| | Sebal PM2 |
|----------------------------------|--------------------|
| Weight of packaging + device | 23 kg |
| Packaging dimensions (H x L x D) | 720 x 500 x 450 mm |
| Type of packaging | Cardboard |

SEBAL PM2

Technical specifications

Model Sebal PM2





www.hygiaphone.fr

