

# SLIDING DOCUMENT SYSTEMS



## Secure transfers of documents and other items for a safer welcome

Document- / packet-handlers are integrated into work surfaces and provide the means to transfer documents, tickets, envelopes and packets between a secure area and an exterior area used by the general public. These document handlers are available in various dimensions and depths and enable larger items to be passed from one side to the other. Because of the way in which they are designed, they offer protection against vandalism, while other models are bullet-proof up to FB6 class, in accordance with the EN1522 standard.

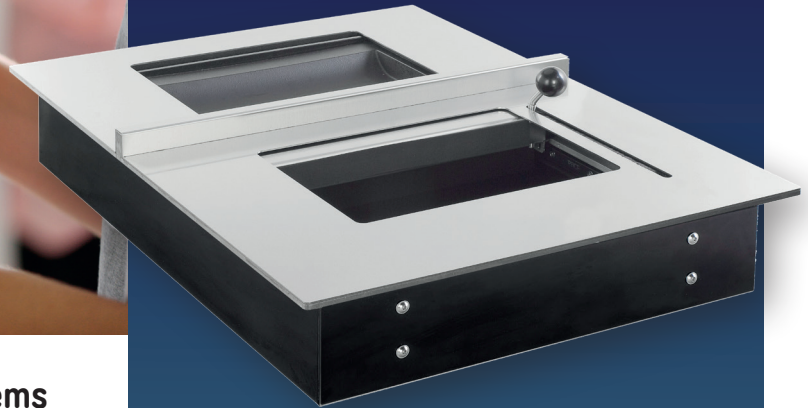
This model is for transferring documents, notes, coins and small items to a secure area. Model 30 provides protection against vandalism, as well as ballistic protection (against weapons attacks) up to level FB4 or even FB6 (optional), in accordance with the EN1522 standards. To improve acoustic performance and the ease with which employees can have discussions with customers, model 30 comes in a version equipped with sound holes.

## MODEL 30

Reference:  
A30445 Model 30  
(protection against vandalism)  
A30208A Model 30 (FB4)  
A30446 Model 30 (FB6)



FB4 to  
FB6



## DO YOU KNOW?



### Other models in the Sliding document -handling system range:

- PMS IDF (vandalism proof)
- Sepac P52 and P140 (vandalism proof)
- Model 20 (FB4 level bullet-proof) with 100/200/400 mm deep compartments

# MODEL 30

## Specifications

### Models 30, 30 FB4 or 30 FB6

- Brushed stainless steel structure (or black RAL 8022 for the model with sound holes, including fixing brackets)
- Compartment made of a special black RAL 8022 "skinplate" material.
- Locking lever
- Steel compartment with stainless steel screws and fastenings
- Delivered assembled
- Usage: indoor
- Vandalism proof or FB4 certified (or optionally FB6), in accordance with the EN1522 standard

Compatibility for installation with other Hygiaphone products:

- Aluminium Fichet doors and partitions
- UniSas EV
- Pay window

### Operation

- Manually-operated sliding compartment. This compartment is automatically locked in place as soon as it reaches its end stop on either the customer or employee side
- Can be unlocked by actioning the knob

### Installation

- Recessed into a reception desk or ticket exchange desk work surface
- Allow for a removable section on the interior side so that the note-handling system can be replaced if needed
- Can be surface-mounted or recessed.

### Applications

- Metro stations
- Foreign exchange desks
- Railway stations
- Motorway toll gates
- Casinos

### Advantages

- Automatic locking of the sliding plate
- Ballistic protection
- Acoustic comfort provided by sound holes
- Design
- Small footprint
- Quick and easy to install

### Options

- Sound holes for the FB4 model

# MODEL 30

## Dimensions

Dimensions (mm)	Model 30 FB4			Model 30 FB6		
	Overall	Body	Tray capacity	Overall	Body	Tray capacity
Height	71	69	30	141	127	30
Width	450	433	335	620	554	342
Depth	600	588	225	840	770	225
Weight (kg)	19			130		
Size of area to be reserved (H x W x D)	71 x 437 x 592 mm			141 x 810 x 594 mm		

Dimensions (mm)	Model 30 (protection against vandalism)		
	Overall	Body	Tray capacity
Height	63	61	30
Width	450	433	335
Depth	600	588	225
Weight (kg)	16		
Size of area to be reserved (H x W x D)	63 x 437 x 592 mm		

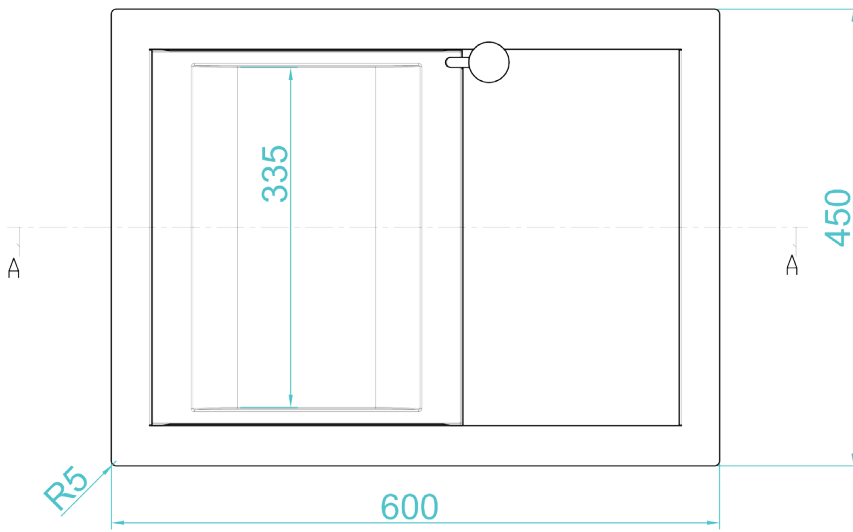
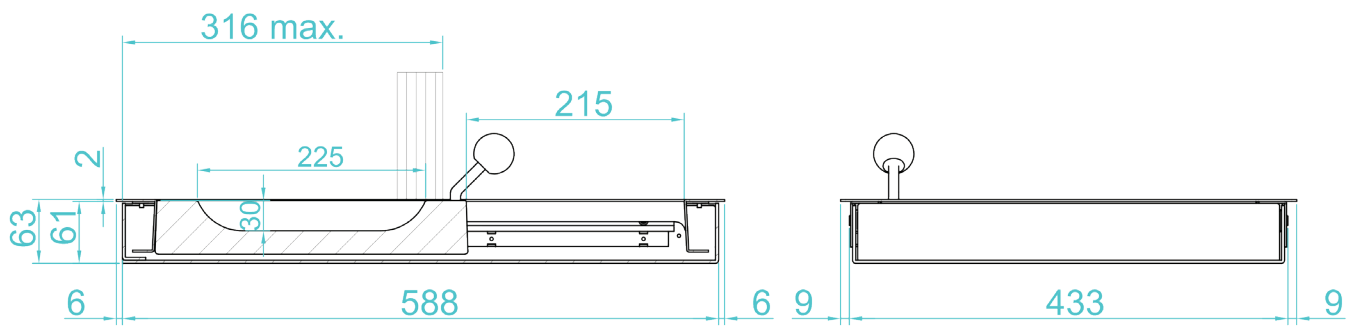
## Packaging

	Model 30	Model 30 FB4	Model 30 FB6
Weight of packaging + device	30 kg	35 kg	125 kg
Packaging dimensions	710 x 540 x 300 mm		1200 x 800 x 400 mm
Type of packaging	Disposable pallet		Euro-pallet

# MODEL 30

## Technical specifications

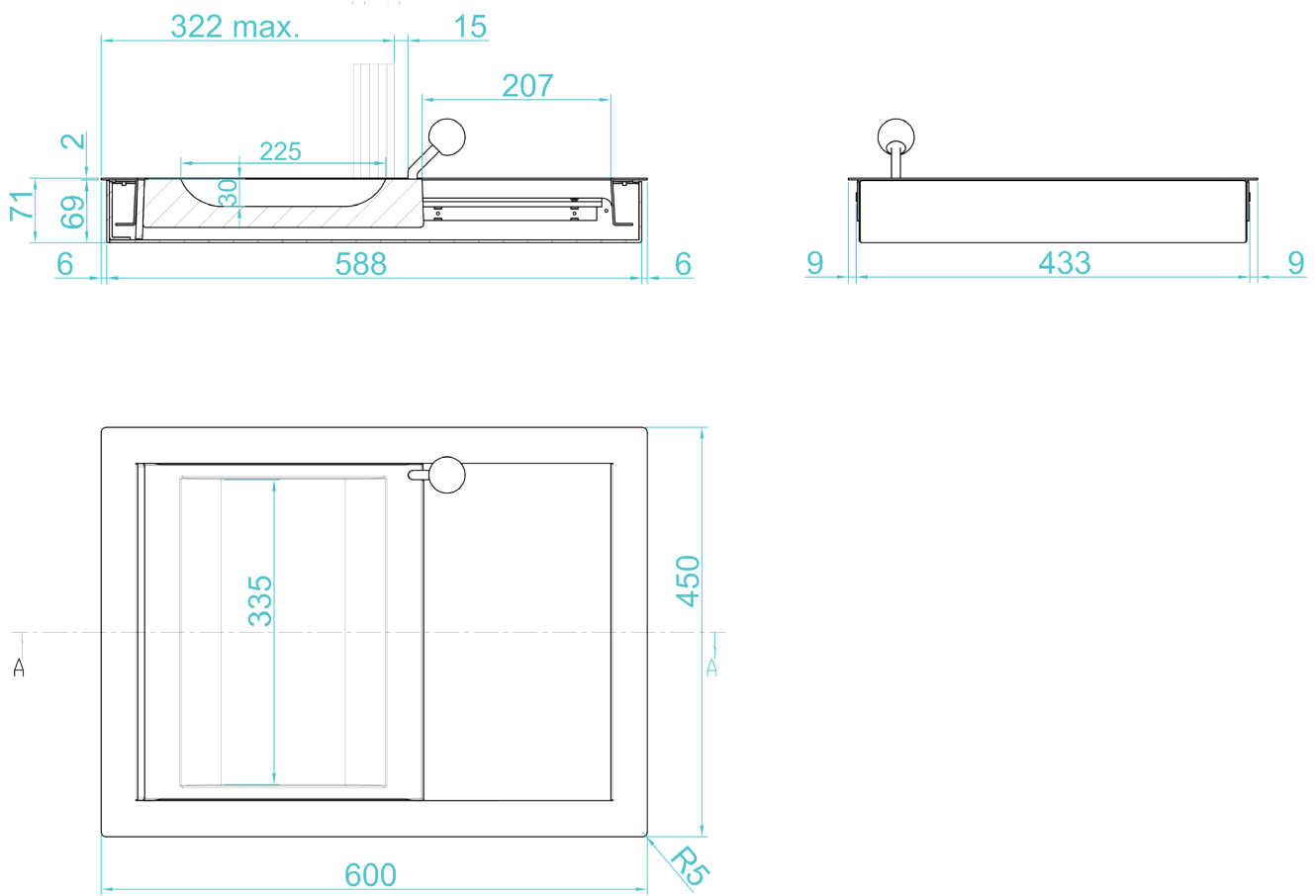
### Model 30 (protection against vandalism)



# MODEL 30

## Technical specifications

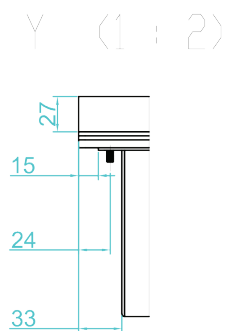
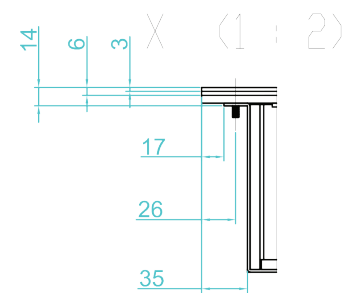
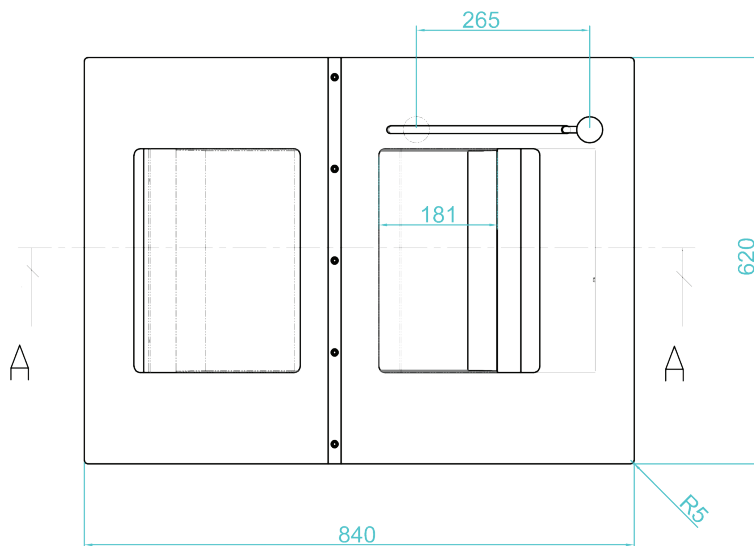
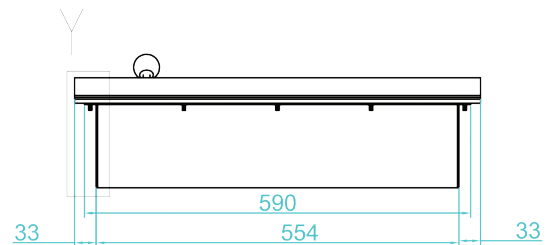
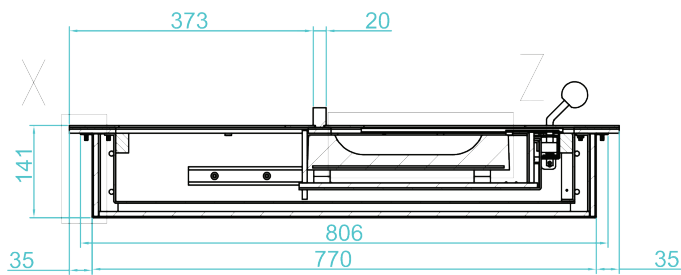
### Model 30 FB4



# MODEL 30

## Technical specifications

### Model 30 FB6



Z (1 : 2)

