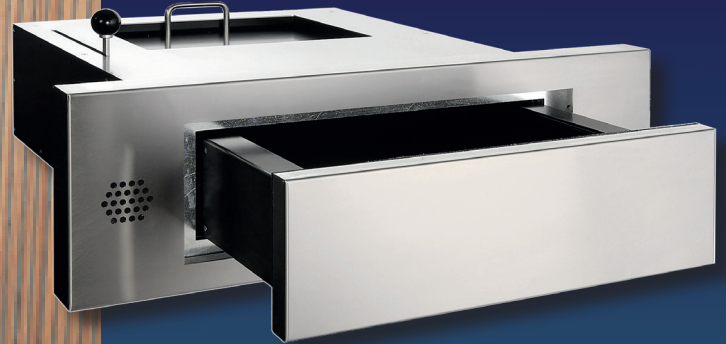


# FRONT-OPENING COUNTERS



## MODEL 54

Reference:

A30375 Model 54 without  
panel or intercom system

A30376 Model 54.01 with panel  
and intercom system



FB7 NS

### Secure transfers of documents and other items for a safer welcome

Front-opening counters are mainly used in sheltered outdoor areas (guard stations, welcome stations, desks, etc.). They are large enough to securely transfer both large and small documents and packets, and can provide protection against vandalism (some are even bullet-proof), offering compliance with the highest levels of certification (FB7NS). If required, certain models can be rendered fire-resistant. When used in conjunction with a full-duplex intercom system, these front-opening counters provide employees with complete protection against all kinds of physical attack, drafts and dust.

Model 54 is used for transferring coins, notes and documents into high-risk areas (bullet-proof to FB7 NS, certified as meeting the EN1522 standard) via a secure sliding drawer. They are transferred from a secure interior area (on the branch side) to an exterior area used by the general public.

### DO YOU KNOW?



#### Other models in the coin- / banknote- handling system range (fixed tray)

- PMS-BE (vandalism proof)
- Model 50 (vandalism proof)
- Model 52 (FB4 level bullet-proof)
- Model 53 (FB4 level bullet-proof)
- Model 63 (FB6 level bullet-proof)

## Specifications

### Models 54 and 54.01

- Steel structure with additional plates made of special steel.
- Brown-black painted surfaces.
- Front-facing façade, bottom of the sliding drawer and inner cover are made of brushed stainless steel.
- Use: indoor or outdoor (sheltered)
- Certified bullet-proof to FB7 NS, meets the requirements of the EN1522 standard

Model 54.01 is delivered with a front-facing panel and an integrated intercom system. (Description of intercom system on a separate sheet).

### Operation

- Drawer is manually opened by actioning the knob.
- The sliding cover on the inner side and the drawer are both mutually locked by a mechanical system. The drawer may only be moved when the cover is closed. The two end stops are released by pressing the control lever.

### Servicing / maintenance

This product requires no servicing, maintenance or lubrication.

### Installation

This front-opening counter can be installed:

- In concrete walls
- In tubular framed steel walls (e.g.: secure modular enclosures)
- In secure Fichet aluminium partitions

The counter is inserted from the outside into the opening made in the facade. It needs to be installed and mounted onto a console (see Plans/technical characteristics). Pre-drilled mounting holes.

### Applications

- Motorway toll gates
- Service stations
- Drive-in restaurants
- Embassies
- Security posts

### Advantages

- Aesthetic
- Can be used to protect people and valuable items
- Provides protection against drafts
- Quick and easy to install
- FB7 certified

## Dimensions

Dimensions (mm)	Model 54			Model 54.01		
	Front facade	Body	Drawer	Front facade	Body	Drawer
Height	244	189	95	244	189	958
Width	600	560	384	780	560	384
Depth	55	634	346	55	634	346
Extensions	248			248		
Weight (kg)	170			175		
Size of area to be reserved	Cut-out in the facade (H x L): 194 x 570 mm					

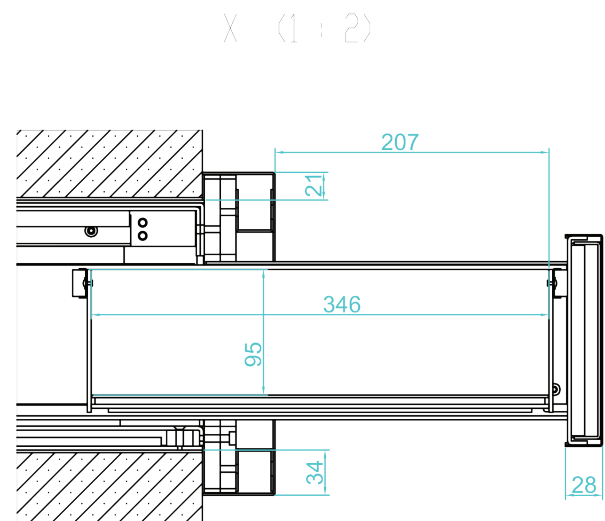
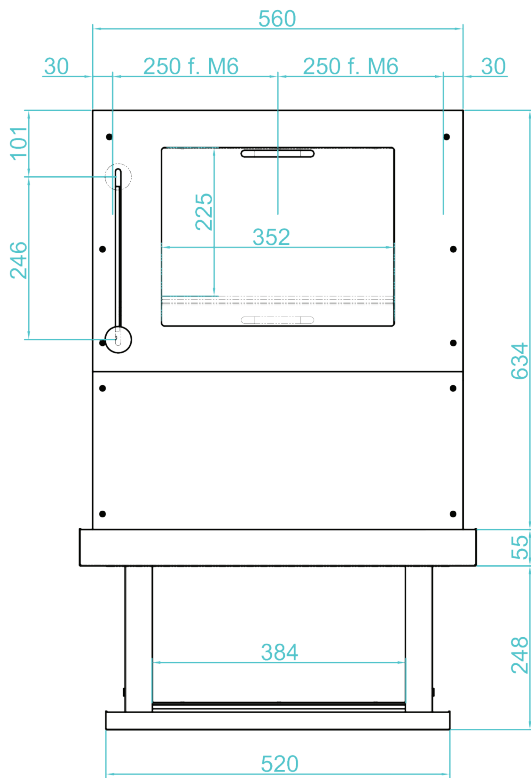
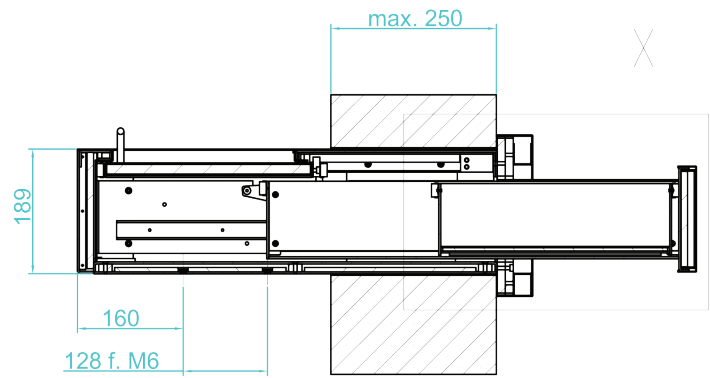
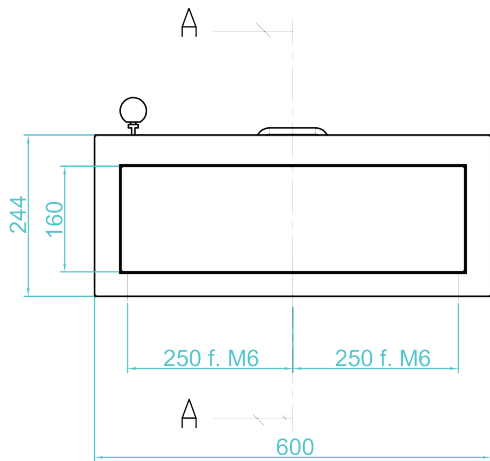
## Packaging

	Model 54	Model 54.01
Weight of packaging + device	180 kg	
Packaging dimensions	1200 x 800 x 500 mm	
Type of packaging	Euro-pallet	

# MODEL 54

## Technical specifications

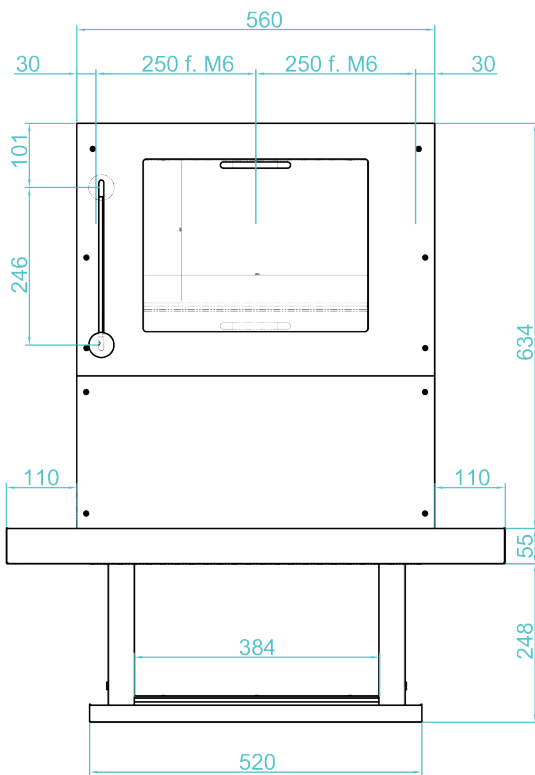
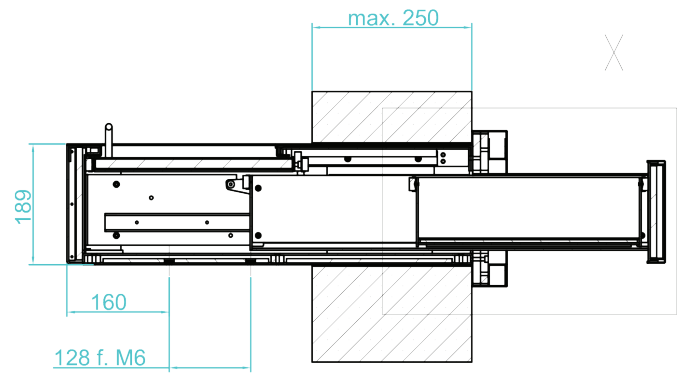
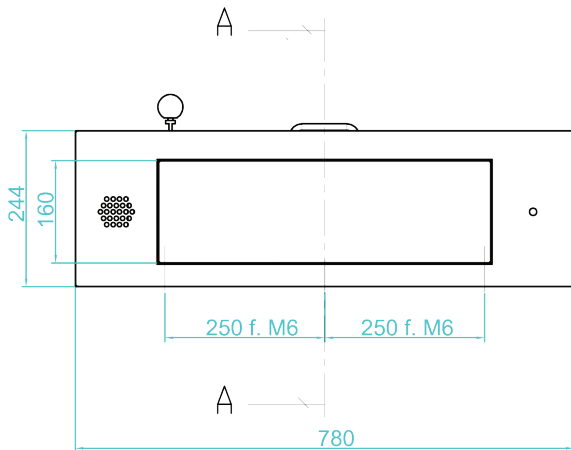
### Model 54



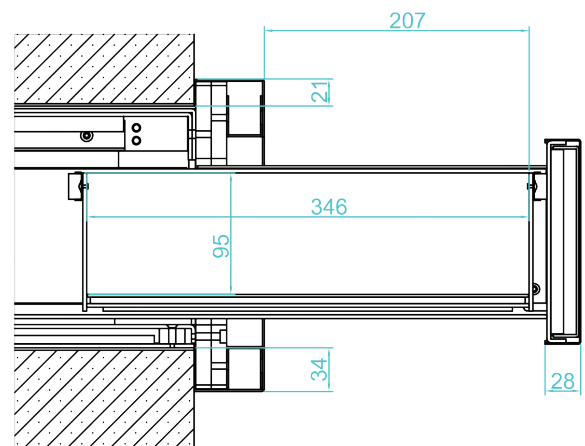
# MODEL 54

## Technical specifications

### Model 54.01



X (1 : 2)





[www.hygiaphone.fr](http://www.hygiaphone.fr)

