

# FRONT-OPENING COUNTERS



## MODEL 53

Reference:

A30416 Standard with panel  
A30195 with strip and  
intercom system

A30447 Model 53 FB4 CF90

A30448 Model 53.01 FB4 CF90

A30465 Model 53.01H FB4

A30483 Model 53 H FB4

A30484 Modèle 53 H FB4 CF90

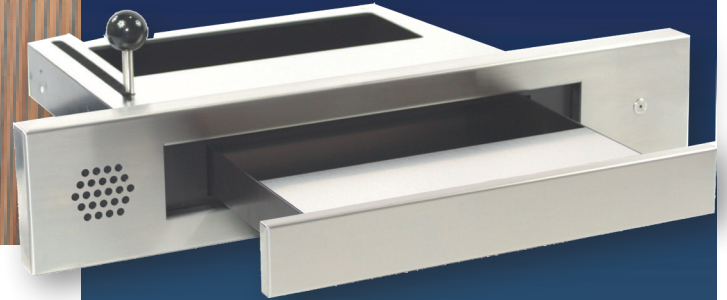
A30485 Model 53.01 H CF90



FB4



CF60/90



### Secure transfers of documents and other items for a safer welcome

Front-opening counters are mainly used in sheltered outdoor areas (guard stations, welcome stations, desks, etc.). They are large enough to securely transfer both large and small documents and packets, and can provide protection against vandalism (some are even bullet-proof), offering compliance with the highest levels of certification (FB7NS). If required, certain models can be rendered fire-resistant. When used in conjunction with a full-duplex intercom system, these front-opening counters provide employees with complete protection against all kinds of physical attack, drafts and dust.

Model 53 can be used to transfer documents, forms of identification and other items up to 45 mm high via a secure sliding drawer. They are transferred from a secure interior area to an exterior area used by the general public.

### DO YOU KNOW?



#### Other models in the front-opening counter range

- PMS-BE (vandalism proof)
- Model 50 (vandalism proof)
- Model 52 (FB4 level bullet-proof)
- Model 54 (FB7 level bullet-proof)
- Model 63 (FB6 level bullet-proof)

# MODEL 53

## Specifications

### Model 53

- Natural anodised aluminium frame and drawer
- Stainless steel front panel and drawer
- Black lacquered galvanised sheet steel frame
- Receptacle for coins/notes
- In its open position, the drawer features a tray which can be used as a desk mat
- Front facade made of stainless steel with integrated microphone
- Use: indoors or outdoors (sheltered)
- Certified as bullet-proof to level FB4 NS, in accordance with the EN 1522 standard
- We can provide optional fire resistance for Model 53 CF 90 and Model 53 H CF90 (53 H CF60 manufactured identically to the tested model 63.01 H CF90 without shields FB6)

### Operation

- Drawer is manually opened by actioning the knob
- In its closed position, the drawer is automatically locked in place

### Servicing / maintenance

This product requires no servicing, maintenance or lubrication

### Installation

Mechanical product, installation flush with the interior or exterior facade (sheltered).

This front-opening counter can be installed:

- in concrete walls,
- in tubular framed steel walls (e.g.: secure modular enclosures),
- in secure Fichet aluminium partitions.

A structure on which the front-opening counter can be rested is required, and on which it can be mounted using four M6 screws (pre-drilled compartment).

Avoid sealing the counter directly into the facade (it must be possible to remove the device for any repairs that might be required).

### Applications

- Motorway toll gates
- Service stations
- Drive-in restaurants
- Embassies
- Security posts
- Sales outlets

### Advantages

- Aesthetic
- Can be used to protect people and objects of value
- Provides protection against drafts
- Quick and easy to install
- Small footprint

### Options

- CF90 firewall

# MODEL 53

## Dimensions

Dimensions (mm)	Model 53 (with or without intercom system)			Model 53 CF 90 <sup>(1)</sup> (with or without intercom system)		
	Front panel	Body	Drawer	Front panel	Body	Drawer
Height	130	62,5	38	22,5	115,5	32,5
Width	670	420	320	670	526	320
Depth	31,5	372,5	215	80	421	265
Extension	218			218		
Weight (kg)	26			70		
Size of area to be reserved	Cut-out in the facade (H x W): 67 x 424 mm			Cut-out in the facade (H x W): 155 x 566 mm <sup>(2)</sup>		

Dimensions (mm)	Model 53.01 H (with or without intercom system)		
	Front panel	Body	Drawer
Height	240	159	120
Width	596	449	330
Depth	36	541	347
Extension	302		
Weight (kg)	40		
Size of area to be reserved	Cut-out in the facade (H x W): 163 x 453 mm		

Dimensions (mm)	Models 53 H CF90 <sup>(1)</sup> (with or without intercom system)		
	Front panel	Body	Drawer
Height	319	212	120
Width	675	555	330
Depth	82	588	373
Extension	302		
Weight (kg)	145		
Size of area to be reserved	Cut-out in the facade (H x W): 252 x 595 mm <sup>(2)</sup>		

<sup>(1)</sup> Provide a fire kit for the assembly of the counter

<sup>(2)</sup> The dimensions for the cut-out in the facade are given with the additional 20mm (width and height) required for the mineral wool to be placed around the front counter (see manual)

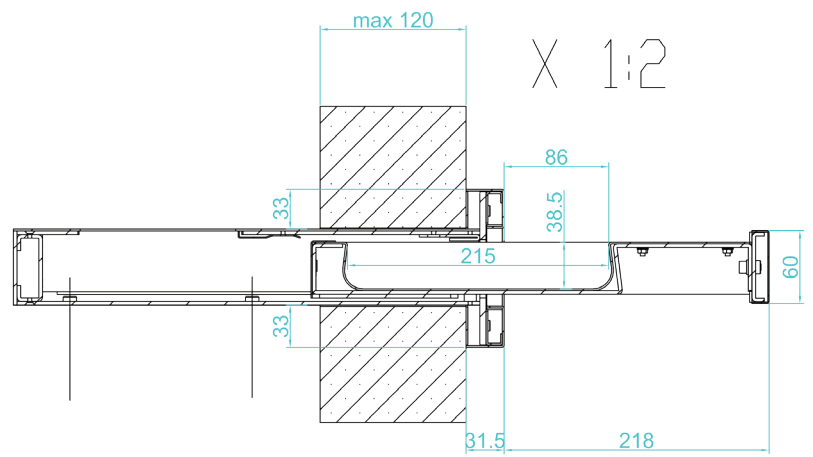
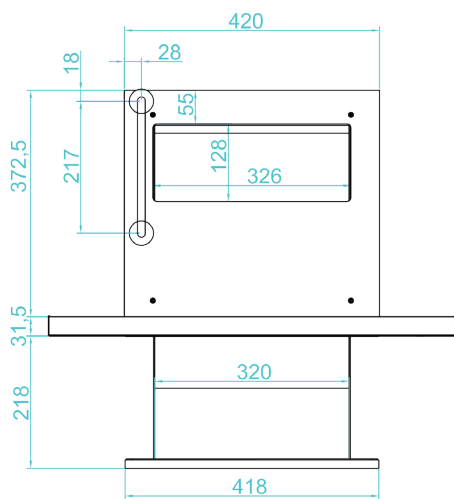
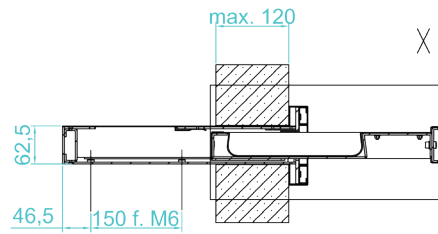
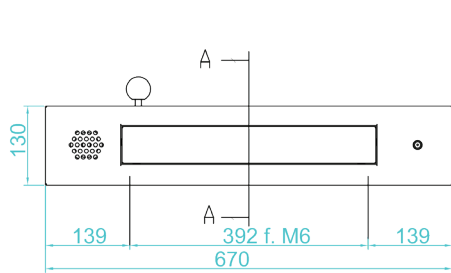
## Packaging

	53	53.01	53 CF90	53.01 CF90	53 H	53.01 H	53 H CF90	53.01 H CF90
Weight of packaging + device	53 kg	36 kg	70 kg	75 kg	81 kg	85 kg	145 kg	150 kg
Packaging dimensions	710 x 540 x 300 mm	710 x 540 x 400 mm	710 x 540 x 500 mm	1200 x 800 x 400 mm	1200 x 800 x 600 mm	1200 x 800 x 750 mm		
Type of packaging	Disposable pallet				Euro-pallet			

# MODEL 53

## Technical specifications

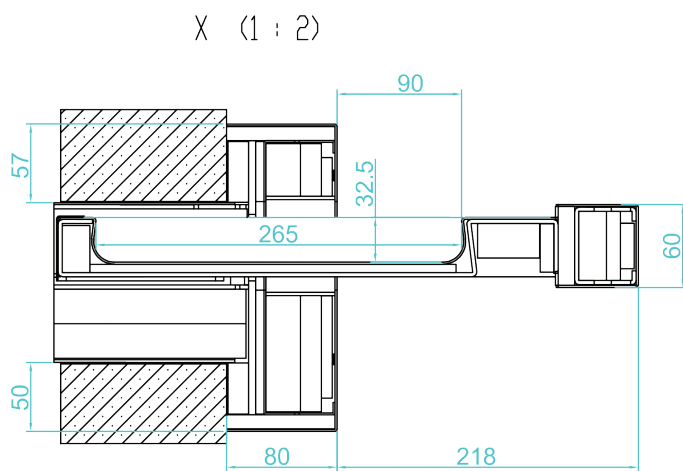
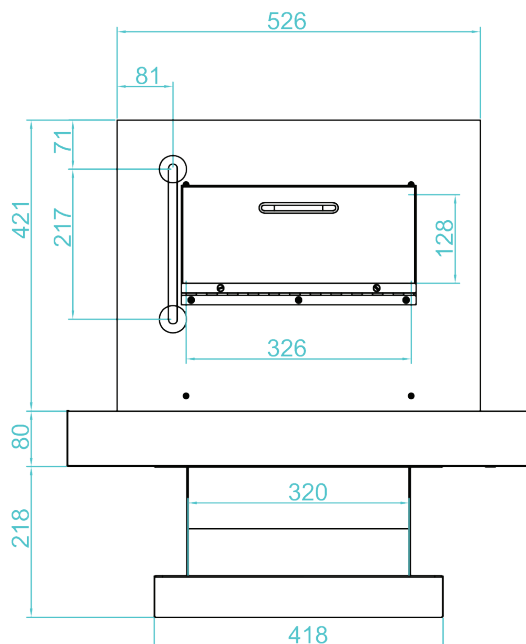
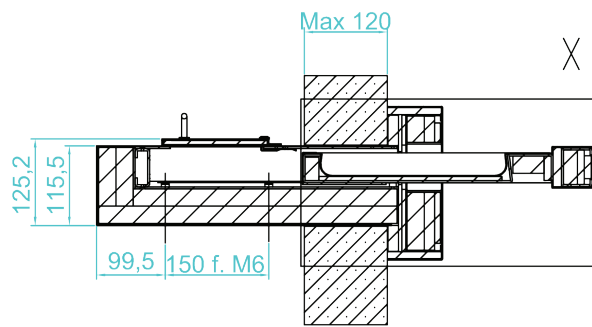
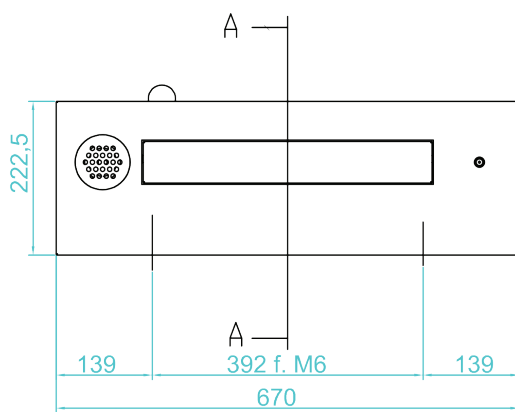
### Model 53.01



# MODEL 53

## Technical specifications

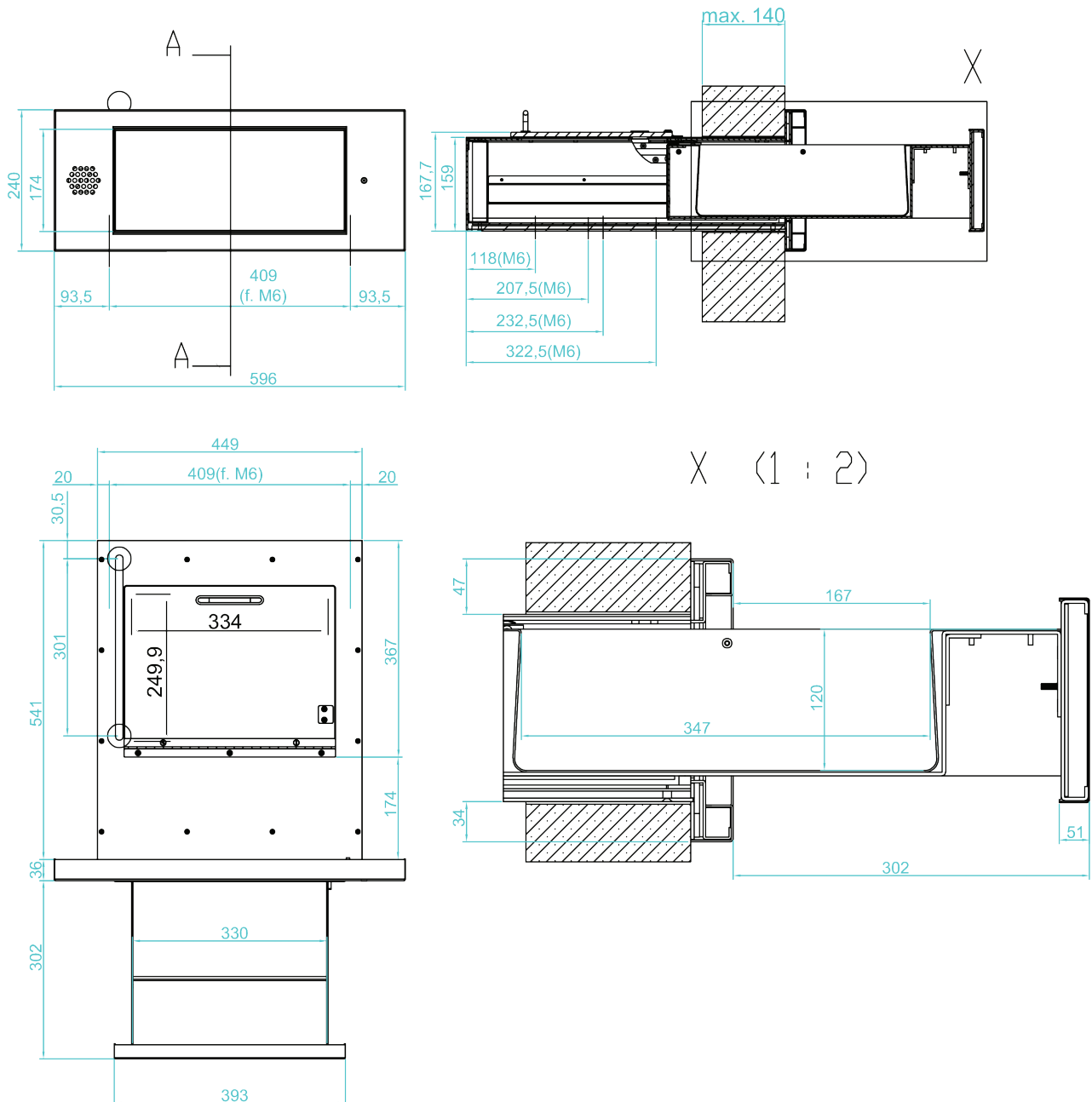
Model 53.01 CF90



# MODEL 53

## Technical specifications

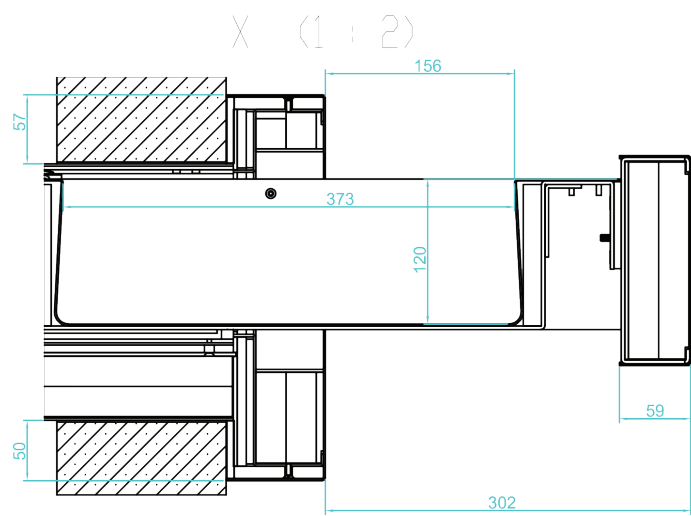
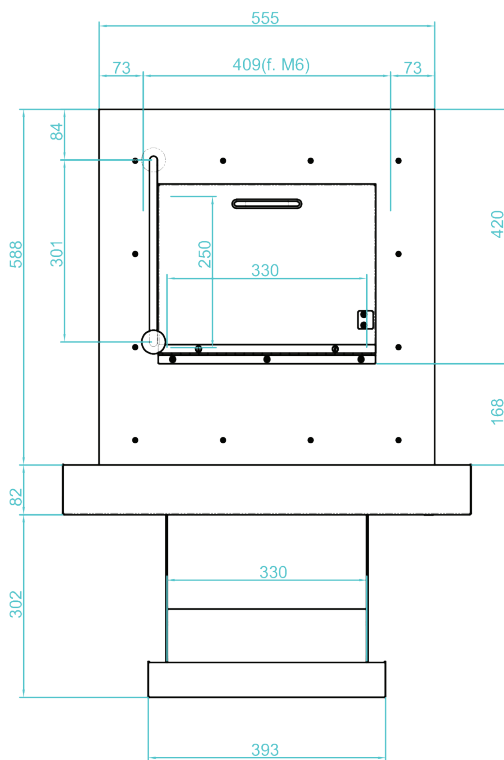
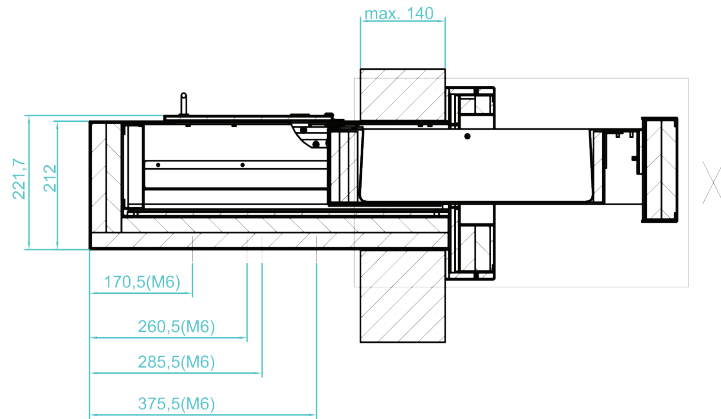
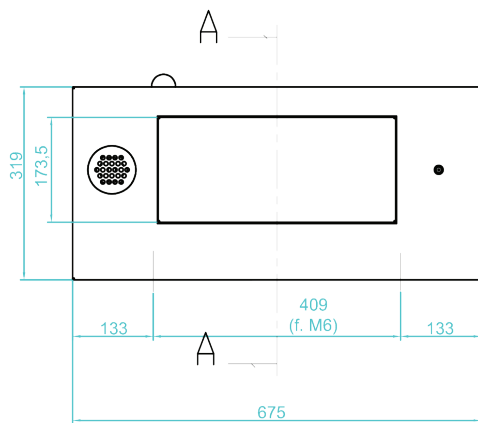
### Model 53.01 H



# MODEL 53

## Technical specifications

### Model 53.01 H CF90





[www.hygiaphone.fr](http://www.hygiaphone.fr)

